

## Liebherr LTF 1045-4.1 9.5 Meter Jip Radio Remote MAN TGS 41.400 8x4 Euro 6 2 Pieces!

### Description

Damages: none

MAN TGS 41.400 8x4.

Year: 2015.

Milage: 53.301 km.

Automatic.

Weight: 38.000 kg.

Max weight: 42.000 kg.

Axle load:

1: 9000 kg.

2: 9000 kg.

3: 12.000 kg.

4: 12.000 kg.

Audidisplay with Radio CD and Navigation.

Electrical operated windows and mirrors.

Airconditioning.

Nightheater.

Retarder / Intarder.

Sleeper cabin 1 bed.

Seatheating.

Euro 6 Ad Blue.

Alcoa.

Hubreduction.

Steelsuspension.

Tyres:

Front: 385/65R22,5 50-90%.

Rear: 315/80R22,5 70%.

Liebherr LTF 1045-4.1.

Year: 2015.

Hours: 5019.

Jip: 9.5 meter.

9 ton counterweight.

Radio remote.

Liebherr D934 LA6 engine.

175 HP / 129 KW.

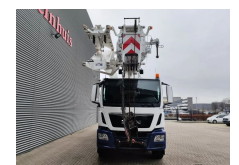
Telescopausleger / Boom: 10.52 - 35.00 meter.

2 Pieces available!

German Truck!

ID NR: 9.

The General Terms and Conditions of Heinhuis are applicable to all adverts, offers and quotations by Heinhuis, all agreements entered into by Heinhuis and the negotiations preceding them. By any form of response you accept the applicability of the General Terms and Conditions of Heinhuis and you declare that you have taken note of these General



# Gebr. Heinhuis

T.: [+31 \(0\) 546 480 520](tel:+31(0)546480520)

E.: [info@gebrheinhuis.com](mailto:info@gebrheinhuis.com)

Darwin 16

7609 RL, Almelo

Nederland

Terms and Conditions. Our prices are export netto prices.